



BOONE ELEMENTARY

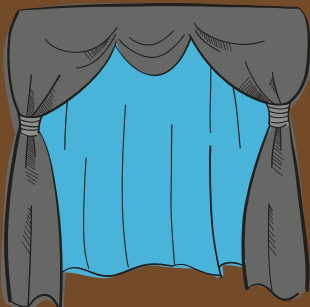
Arriving in the Morning

**STUDENTS MAY
ENTER THE
BUILDING
STARTING AT
7:15 AM**

**STUDENTS WILL REPORT
TO THE CAFETERIA WHERE
BREAKFAST WILL BE
SERVED FROM 7:15 AM-
7:45 AM**

**STUDENTS WILL WAIT IN THE
CAFETERIA FOR MORNING
ASSEMBLY TO BEGIN AT 7:30 AM**

**TEACHERS WILL MEET STUDENTS
IN THE CAFETERIA AND WALK
THEM TO CLASS AFTER THE
MORNING ASSEMBLY.**



**TARDY BELL RINGS AT
7:40 AM**



**GOAL: 100% ON TIME DAILY
ATTENDANCE**

CAR DROP OFF ETIQUETTE



- **PULL UP TO THE CURB TO LETS STUDENTS OUT.**
- **DRIVERS STAY IN THE CAR.**
- **SAVE HANDICAPPED SPACES FOR THOSE WHO NEED THEM.**
- **BE PATIENT**
- **BE READY TO GO! STUDENTS ON PASSENGER SIDE, BACKPACKS PACKED AND SHOES TIED.**
- **NO CELL PHONE USE IN SCHOOL ZONES... IT'S THE LAW!**
- **DO NOT PARK IN A CROSSWALK.**
- **SIDE DROP-OFF DOOR LOCKS AT 7:30AM.**

See You Soon